

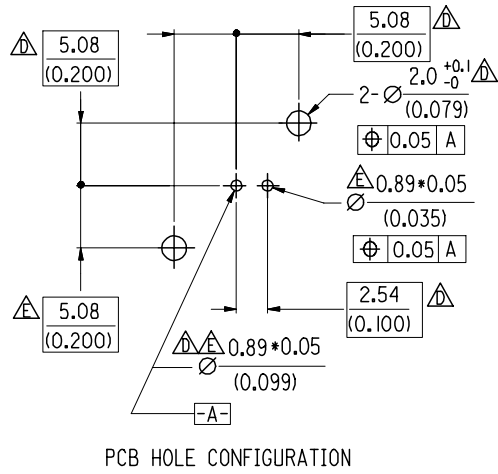
ENG. NO.

EDP NO.

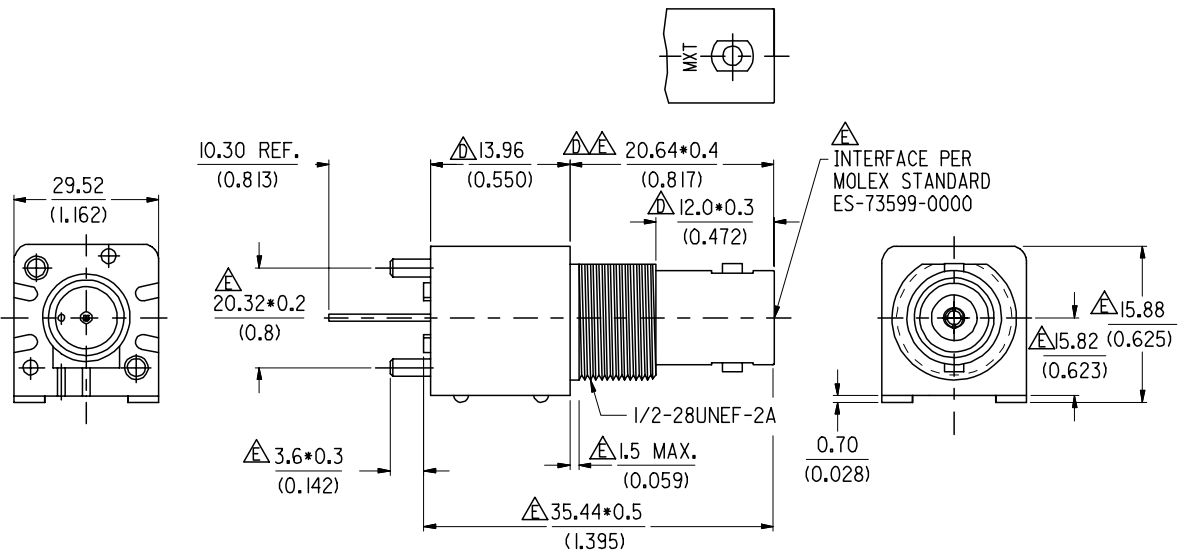
SIMILAR ITEM

CADFILE NO.

DO NOT SCALE DRAWING

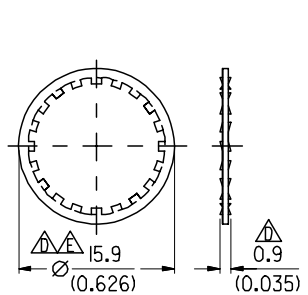


PCB HOLE CONFIGURATION

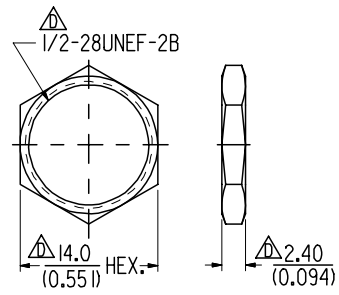


- CONSTRUCTION:**
 BODY-----ZINC ALLOY
 HOUSING-----POLYESTER BUTYLENE TEREPHTHALATE (WHITE)
 CENTER CONTACT----PHOSPHOR BRONZE
 DIELECTRIC-----POLYPROPYLENE (94V2)
 MOUNTING POST-----BRASS
SOLDER TAIL-----COPPER OVER STEEL WIRE
 LOCK WASHER-----PHOSPHOR BRONZE
 NUT-----BRASS
- FINISH:**
 BODY-----NICKEL PLATING
 CENTER CONTACT----GOLD PLATING (10 µ")
 SOLDER TAIL-----TIN PLATING
 MOUNTING POST-----TIN PLATING
 LOCK WASHER-----NICKEL PLATING
 NUT-----NICKEL PLATING

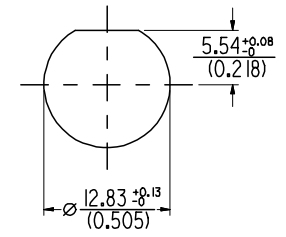
- MECHANICAL & ELECTRICAL CHARACTERISTICS:**
 PER PRODUCT SPECIFICATION PS-73598-0050
- MATERIAL & FINISHES:**
 PER PRODUCT SPECIFICATION PS-73598-0050
- PACKAGING:**
 TRAY PACKAGING



LOCK WASHER



JAM NUT



RECOMMENDED MOUNTING HOLE
 MAXIMUM PANEL THICKNESS: 5.5 mm
 RECOMMENDED MOUNTING TORQUE 5 inch-pounds MAX.

				MATERIAL : SEE NOTES		MOLEX TAIWAN LTD. (R.F. DIVISION)
				FINISH : SEE NOTES		
				SCALE : 2:1	UNIT : mm(INCH)	
				DRAWN BY : IRIS WANG 99/07/21		GENERAL TOLERANCES ANGLE : ± 3° DIM. ± 0.25 (± 0.01)
				CHK'D BY :		DRW. NO.: SDA-73131-5013
				APPR'D BY :		TITLE : 50 OHM BNC (J) VERTICAL PCB RECEPTACLE (MOLDED)
STANDARD ITEM				<input type="checkbox"/> YES <input checked="" type="checkbox"/> NO		REV E

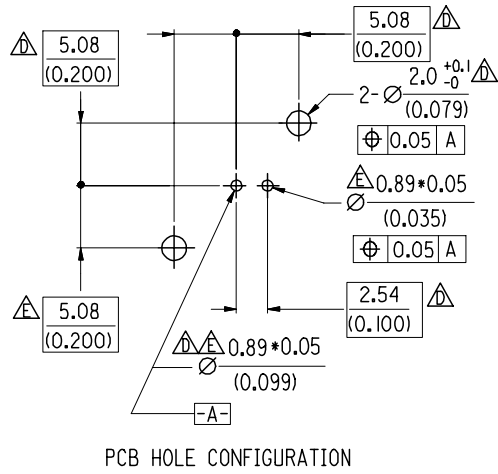
ENG. NO.

EDP NO.

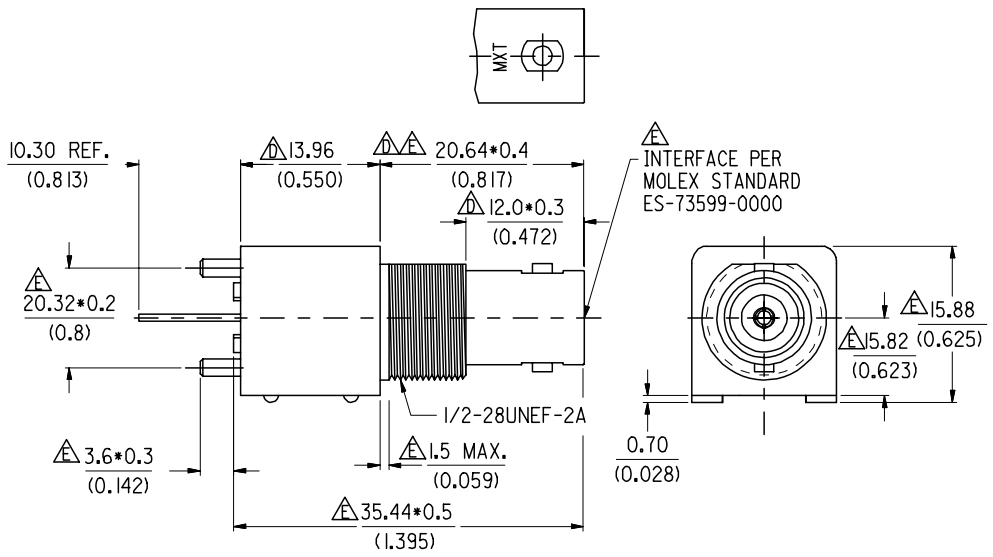
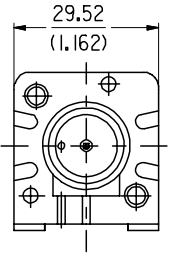
SIMILAR ITEM

CADFILE NO.

DO NOT SCALE DRAWING

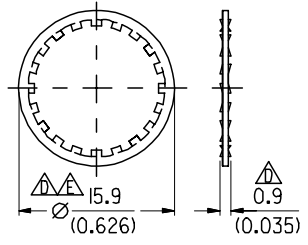


PCB HOLE CONFIGURATION

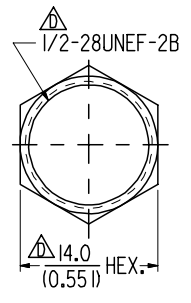


- CONSTRUCTION:**
 BODY-----ZINC ALLOY
 HOUSING-----POLYESTER BUTYLENE TEREPHTHALATE (WHITE)
 CENTER CONTACT----PHOSPHOR BRONZE
 DIELECTRIC-----POLYPROPYLENE (94V2)
 MOUNTING POST-----BRASS
SOLDER TAIL-----COPPER OVER STEEL WIRE
 LOCK WASHER-----PHOSPHOR BRONZE
 NUT-----BRASS
- FINISH:**
 BODY-----NICKEL PLATING
 CENTER CONTACT----GOLD PLATING (10 µ")
 SOLDER TAIL-----TIN PLATING
 MOUNTING POST-----TIN PLATING
 LOCK WASHER-----NICKEL PLATING
 NUT-----NICKEL PLATING

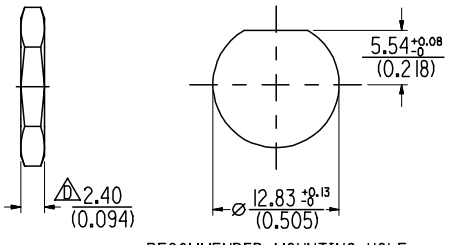
- MECHANICAL & ELECTRICAL CHARACTERISTICS:**
 PER PRODUCT SPECIFICATION PS-73598-0050
- MATERIAL & FINISHES:**
 PER PRODUCT SPECIFICATION PS-73598-0050
- PACKAGING:**
 TRAY PACKAGING



LOCK WASHER



JAM NUT



RECOMMENDED MOUNTING HOLE
 MAXIMUM PANEL THICKNESS: 5.5 mm
 RECOMMENDED MOUNTING TORQUE 5 inch-pounds MAX.

				MATERIAL : SEE NOTES		MOLEX TAIWAN LTD. (R.F. DIVISION)
				FINISH : SEE NOTES		
				SCALE : 2:1	UNIT : mm(INCH)	
				DRAWN BY : IRIS WANG 99/07/21		GENERAL TOLERANCES ANGLE : ± 3° DIM. ± 0.25 (± 0.01)
				CHK'D BY :		DRW. NO.: SDA-73131-5013
				APPR'D BY :		TITLE : 50 OHM BNC (J) VERTICAL PCB RECEPTACLE (MOLDED)
STANDARD ITEM				<input type="checkbox"/> YES <input checked="" type="checkbox"/> NO		REV E
				SHEET 1 OF 1		